

**SUBJECT
PROGRAMMES
26/27**

KEY STAGES



SAGE COLLEGE

THE BRITISH INTERNATIONAL SCHOOL OF JEREZ

INDEX

CURRICULUM INFORMATION

1. INTRODUCTION

2. ADMISSION TO KEY STAGE 5

3. SUBJECT OPTIONS PROCESS

4. A LEVEL / BTEC OPTIONS

5. ENTRY REQUIREMENTS

6. HIGH SCHOOL CURRICULUM





1. INTRODUCTION

Welcome to Sage College, The British International School of Jerez Key Stage 5 (A-Level Stage). Key Stage 5 is a high-profile part of our outstanding school, with an excellent track record of examination results and successful applications to competitive courses in Higher Education, alongside other academic routes, apprenticeships, and alternative training pathways. The majority of our current students, as well as an increasing number of students from other schools, join this highly successful Key Stage 5 at the end of Year 11.

Key Stage 5 represents two pivotal years in the lives of all pupils at Sage College. Students are treated as individuals and also take an active role in supporting the wider school community. All students have access to high-quality guidance and support throughout their time in Key Stage 5. Mentoring conversations assist students with everything from discussions around academic progress and setting personal targets, to career pathways and personal matters. The pastoral support at Sage College is an area of particular strength. Feedback demonstrates that students truly value and enjoy the Key Stage 5 experience at our school.

The academic and extra-curricular opportunities on offer help ensure that students leave Sage College well-qualified and prepared for the broader challenges of adult life. This includes a weekly enrichment and PSHE programme, which forms an integral part of their school timetable.

Choosing the correct subjects to study and excelling in them is vital for all students. We hope that the information contained within this guide, alongside the information in the online prospectus, will help students make informed decisions about subject choices and the potential career pathways available to them.

The school offers a challenging and broad range of A Level and BTEC options. This guide contains information about the courses available to study from September 2026. Each course description outlines entry requirements, potential Higher Education opportunities, and possible career paths, which we hope you will find useful. All students are expected to study a minimum of four courses, comprising three full academic subjects and one enhancement course. Students achieving a GCSE good score from their best six subjects will be considered to study four full A-Levels or a combination of A Level and BTEC courses.

Adrian Stephanides
Head of Key Stage 5



2. ADMISSION TO KEY STAGE 5

Priority will be given to existing pupils transferring from Year 11 who meet the entrance criteria. Admission to the Sixth Form will be as a result of applicants accruing at least 33 points from their best six GCSE, BTEC or CNAT grades. Short course GCSEs may be included within this calculation but at half value i.e. a 7 grade in RS would count as half a grade at 3.5 points. Applicants must also achieve an absolute minimum of grade 4 in GCSE Mathematics and English Language.

Applicants must achieve at least a **grade 6 at iGCSE** in subjects they wish to study at A Level, with the exception of **Mathematics, where a grade 7 or higher is required**. In the case of new subjects e.g. Media, please see the **entry requirement section** in this guide where you will find the specific entry requirements for all subjects.

The admission number for external candidates will be 40, but this figure may be exceeded in the event that this and the number of internal pupils transferring into Year 12 is less than the overall figure for the year group, which is 160. For example: A student with the following grades: History 7, Geography 5, French 6, Biology 5, Chemistry 6, Physics 5, Spanish 7, English Language 6, English Literature 8, Mathematics 5 and Photography 7 would score $8+7+7+7+6+6 = 41$ points and qualify for the sixth form studying subjects such as History, Chemistry, Spanish or English Literature.

3. SUBJECT OPTIONS APPLICATION PROCESS

Internal Applications – for students currently in Year 11 at Sage College

Applications to join Key Stage 5 (A-Level / BTEC Stage) will be made using an online form that will be shared via email to all Year 11 families.

Advice to Students:

- Research the course details carefully, either through the subject guide or online, before making your subject selections.
- Consider your academic strengths and interests before making your final decision.
- Think about how your subject combination may influence your future university and career choices – additional support is available through the Key Stage 5 Office.
- When submitting your options, list them in order of preference, and ensure you include a reserve full academic subject and a compulsory enhancement course (unless you are opting to study four full A Levels).

The Key Stage 5 team is always available to answer questions or provide guidance regarding entry to A-Level / BTEC study. Please don't hesitate to get in touch.

Key Contacts: Adrian Stephanides - Head of Key Stage 5  adrian.stephanides@sagecollege.eu



4. THE A LEVEL / BTEC PROGRAMME AT SAGE COLLEGE

A-levels/International A-levels, or (International) Advanced Levels are two-year programmes of study offered in Year 12 and 13, both within British schools in the UK and worldwide. These qualifications are highly esteemed internationally, facilitating a seamless transition into higher education across the globe.

Introduction to A Levels: At Sage College, students specialise in three or four subjects and undergo externally assessed examinations for all subjects at the culmination of each academic year, subject to variations depending on the specific subject. Certain subjects follow linear courses and are assessed once at the conclusion of Year 13.

Some subjects provide the opportunity to attain an Advanced Subsidiary level (AS level), which constitutes 50% of an A level. This option may be extended to students who opt not to pursue a full A level in a particular subject, although this possibility is not universally available across all subjects.

Both AS Levels and A levels are graded on a scale from A to E, with A representing the highest grade achievable. For students applying to universities in the UK, these grades are converted into UCAS points. UCAS translates qualifications and grades into numerical values, which are commonly utilised by UK universities to evaluate whether applicants satisfy the entry criteria for specific courses. For those considering enrollment in Spanish universities, we also provide preparation for the Pruebas de Competencias Específicas (PCE).

Introduction to BTEC: Students can also opt for **BTEC options** which have the same point value as an A Level subject and are globally recognised as part of access into university. BTEC Level qualifications have the same level of content as an A Level qualification however they are assessed 100% via coursework. This offers students a different way of learning and assessment that may be more in line with the students learning style. They are graded as a Pass, Merit or Distinction.

Guidance for Subject Selection: To assist students in making informed subject choices for A-levels/International A-levels, we organize a series of activities in their final year before embarking on their A-level courses.

It is crucial for students to contemplate their interests, abilities, and prospective career paths as they progress through Year 11. These factors should be taken into consideration when determining which subjects to pursue at A Level/International A-level. This booklet furnishes a detailed overview of each A Level/International A-level subject, encompassing subject content, assessment structure, coursework particulars, and more. Students are encouraged to utilize this booklet as a resource and to engage with the careers advisor, subject teachers, and fellow students for any inquiries or concerns they may have.

4. THE A LEVEL / BTEC PROGRAMME AT SAGE COLLEGE

A Level* / BTEC Options			
Option 1	Option 2	Option 3	Option 4
Maths	Biology	Chemistry	Spanish
Media	Business Or BTEC Business	English	German
History	Drama	IT	Russian
BTEC Sport	Physics	Travel	
*Options are A Level unless identified as BTEC			

Option Choices:

Students can select:

- 3 or 4 A Level subjects
- A combination of A Level and BTEC courses

For example a student may decide to follow a pathway that allows them to access a university course in international business, marketing or travel.

They may decide to take the following option choices as their learning style is more suited to subjects with coursework.

Option 1	Option 2	Option 3	Option 4
Media	Business BTEC	Travel	Spanish

5. ENTRY REQUIREMENTS

In High School, we offer the following curriculum, which allows our students to access universities around the world.

Subject	Essential Qualifications (iGCSE)
Biology	Grade B/6 in Biology
Business (A Level & BTEC)	Grade B/6 in Business / Grade C in First Language English
Chemistry	Grade B/6 in Chemistry
Drama	Grade B/6 in Drama
English Language	Grade B/6 in First Language English
History	Grade B/6 in History / Grade B/6 First Language English
Information Technology	Grade B/6 in ICT
Mathematics	Grade A/7 in Maths
Media	Grade C/5 in First Language English
Physics	Grade B/6 in Physics
Russian	Grade B/6 in Russian (Recommended Grade A/7)
Spanish	Grade B/6 in Spanish (Recommended Grade A/7)
BTEC Sport	Grade B/6 in PE & Grade C/5 in Science
Travel & Tourism	Grade B in Travel / Grade C in First Language English

6. HIGH SCHOOL CURRICULUM



CAMBRIDGE
International Examinations

Cambridge International School



Pearson | Edexcel

In the following links, you will find more information about Cambridge and Pearson A Levels and BTECs:

<p><u>Cambridge International AS & A Levels</u></p>	<p><u>Pearson International AS & A Levels</u></p>	<p><u>Pearson International Level 3 BTEC subjects</u></p>
---	---	---

Finally, some students can benefit from some particular arrangements during exams, always depending on particular circumstances. This is called access arrangements, and they are pre-exam arrangements made on behalf of a candidate with particular needs, for example the use of a scribe, modified papers or extra time. Access arrangements allow candidates/learners to show what they know and do without changing the integrity or the demands of the assessment, for example by using a reader or scribe. Access arrangements are approved before an examination or assessment and they allow candidates/learners with special educational needs, disabilities or temporary injuries to access the assessment. In the following links, you can find all the official information regarding access arrangements by Cambridge:

<https://www.cambridgeinternational.org/exam-administration/cambridge-exams-officers-guide/phase-1-preparation/access-arrangements/>

<https://qualifications.pearson.com/en/support/support-topics/exams/special-requirements/access-arrangements.html>

The school will contact those families with children who could benefit from having access arrangements during exams to inform them of the steps that need to be taken.

In the following links you can find more information about how ISCS students access universities and about our IGCSE and A level curriculums:

<https://iscs-zug.ch/en/university-access-and-careers/>

<https://iscs-zug.ch/en/highschool/>

In the following pages you can find more information about the different IGCSE and A level subjects offered at ISCS-The British School of Zug.

A LEVEL MATHEMATICS (YMA01)

Syllabus overview

Edexcel International A Level Mathematics enables students to develop:

- their understanding of mathematics and mathematical processes in a way that promotes confidence and fosters enjoyment
- the ability to reason logically and recognise incorrect reasoning, to generalise and to construct mathematical proofs
- their range of mathematical skills and techniques and use them in more difficult, unstructured problems
- an understanding of coherence and progression in mathematics and of how different areas of mathematics can be connected
- skills to recognise how a situation may be represented mathematically and understand the relationship between 'real-world' problems and standard and other mathematical models and how these can be refined and improved.

Modular structure with 6 equally weighted units.

International AS results will continue to contribute to International A Level.

Content overview

Pure Mathematics 1: Algebra and functions; coordinate geometry in the (x, y) ; trigonometry; differentiation; integration.

Pure Mathematics 2: Proof; algebra and functions; coordinate geometry in the (x, y) plane; sequences and series; exponentials and logarithms; trigonometry; differentiation; integration.

Pure Mathematics 3: Algebra and functions; trigonometry; exponentials and logarithms; differentiation; integration; numerical methods.

Pure Mathematics 4: Proof; algebra and functions; coordinate geometry in the (x, y) plane; binomial expansion; differentiation; integration; vectors.

Statistics 1: Mathematical models in probability and statistics; representation and summary of data; probability; correlation and regression; discrete random variables; discrete distributions; the Normal distribution.

Mechanics 1: Mathematical models in mechanics; vectors in mechanics; kinematics of a particle moving in a straight line; dynamics of a particle moving in a straight line or plane; statics of a particle; moments.

Assessment overview

Each unit has a 75 marks written examination of 1h 30min

International A Level in Mathematics consists of six units, assessed between Y12 and Y13:

P1: Pure Mathematics 1 (16 $\frac{2}{3}$ %)

P2: Pure Mathematics 2 (16 $\frac{2}{3}$ %)

P3: Pure Mathematics 3 (16 $\frac{2}{3}$ %)

P4: Pure Mathematics 4 (16 $\frac{2}{3}$ %)

S1: Statistics 1 (16 $\frac{2}{3}$ %)

M1: Mechanics 1 (16 $\frac{2}{3}$ %)



A LEVEL BIOLOGY (YBI11)

Syllabus overview

Pearson International AS and A Level Biology builds on the skills acquired at iGCSE (or equivalent) level. The syllabus includes the main theoretical concepts which are fundamental to the subject, some current applications of biology, and a strong emphasis on advanced practical skills. Practical skills are assessed in a timetabled practical examination.

Pearson AS and A Level Biology is ideal for learners who want to study biology or a wide variety of related subjects at university or to follow a career in science.

Content overview

Pearson A level Biology focuses on the following areas:

- Cytology, Biochemistry, Genetics, Immunology, Ecology

Assessment overview

(Paper 1, 2 and 3 are part of the AS level (Year 12), and 4, 5 and 6 are A2 (Year 13). Combination of AS and A2 gives the full A level.

PAPER 1 - Multiple choice, open-response, calculations and extended-writing questions (20%)

1 hour and 30 minutes

80 marks

PAPER 2 - Multiple choice, open-response, calculations and extended-writing questions (20%)

1 hour and 30 minutes

80 marks

PAPER 3 - Practical exam (10%)

1 hour and 20 minutes

50 marks

PAPER 4 - Multiple choice, open-response, calculations and extended-writing questions (20%)

1 hour and 45 minutes

90 marks

PAPER 5 - Multiple choice, open-response, calculations and extended-writing questions (20%)

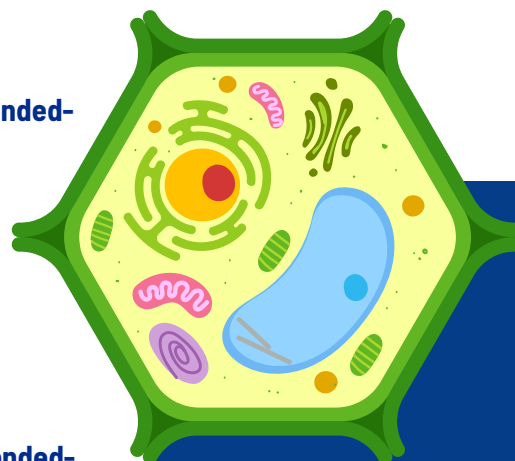
1 hour 45 minutes

90 marks

PAPER 6 - Practical exam (10%)

1 hour and 20 minutes

50 marks



A LEVEL CHEMISTRY (YCH11)

Syllabus overview

Pearson International AS and A Level Chemistry builds on the skills acquired at Pearson IGCSE (or equivalent) level. The syllabus includes the main theoretical concepts fundamental to the subject, along with current applications of chemistry and a strong emphasis on advanced practical skills. Practical skills are assessed in a timetabled practical examination. Pearson International AS and A Level Chemistry is ideal for learners interested in studying chemistry or a wide variety of related subjects at university, or pursuing a career in science.

Content overview

Pearson A level Chemistry focuses on the following areas:

- Physical Chemistry, Inorganic Chemistry, Organic Chemistry, Analysis.

Assessment overview

(Paper 1, 2 and 3 are part of the AS level (Year 12), and 4, 5 and 6 are A2 (Year 13). Combination of AS and A2 gives the full A Level.

PAPER 1 - Multiple choice, open-response, calculations and extended-writing questions (20%)

1 hour and 30 minutes

80 marks

PAPER 2 - Multiple choice, open-response, calculations and extended-writing questions (20%)

1 hour and 30 minutes

80 marks

PAPER 3 - Practical exam (10%)

1 hour and 20 minutes

50 marks

PAPER 4 - Multiple choice, open-response, calculations and extended-writing questions (20%)

1 hour and 45 minutes

90 marks

PAPER 5 - Multiple choice, open-response, calculations and extended-writing questions (20%)

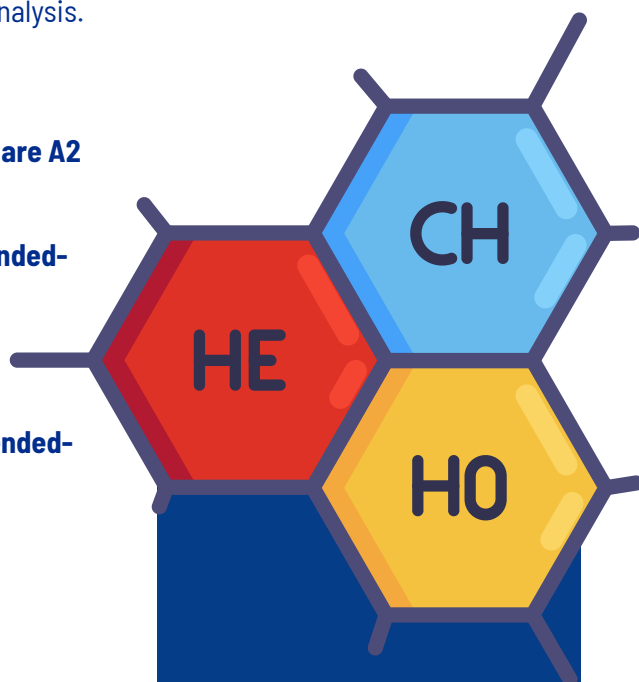
1 hour 45 minutes

90 marks

PAPER 6 - Practical exam (10%)

1 hour and 20 minutes

50 marks



A LEVEL PHYSICS (YPH11)



Syllabus overview

Pearson International AS and A Level Physics builds on the skills acquired at Pearson IGCSE (or equivalent) level. The syllabus includes the main theoretical concepts fundamental to the subject, along with current applications of physics and a strong emphasis on advanced practical skills. Practical skills are assessed in a timetabled practical examination. Pearson International AS and A Level Physics is ideal for learners interested in studying physics or a wide variety of related subjects at university, or pursuing a career in science.

Content overview

Pearson A level Physics focuses on the following areas:

- Mechanics, Thermodynamics, Waves, Electromagnetism, Optics, Gravity, Modern Physics

Assessment overview

(Paper 1, 2 and 3 are part of the AS level (Year 12), and 4, 5 and 6 are A2 (Year 13). Combination of AS and A2 gives the full A Level.

PAPER 1 - Multiple choice, open-response, calculations and extended-writing questions (20%)

1 hour and 30 minutes

80 marks

PAPER 2 - Multiple choice, open-response, calculations and extended-writing questions (20%)

1 hour and 30 minutes

80 marks

PAPER 3 - Practical exam (10%)

1 hour and 20 minutes

50 marks

PAPER 4 - Multiple choice, open-response, calculations and extended-writing questions (20%)

1 hour and 45 minutes

90 marks

PAPER 5 - Multiple choice, open-response, calculations and extended-writing questions (20%)

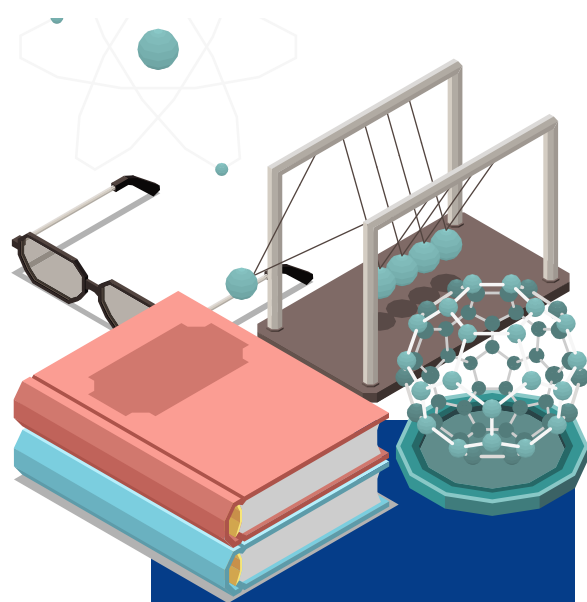
1 hour 45 minutes

90 marks

PAPER 6 - Practical exam (10%)

1 hour and 20 minutes

50 marks



A LEVEL IT (9626)



Syllabus overview

Cambridge International AS & A Level Information Technology enables learners to become effective and astute users of IT.

Students will:

- develop a broad range of IT skills, knowledge and understanding
- apply their learning to efficiently solve problems in a range of situations
- study the structure and use of IT systems for a variety of contexts
- learn about practical IT solutions for business and creative digital technology
- learn about new and emerging technologies and their impact on society.

Content overview

In A Level IT students study the following software & theory topics:

Practical: Databases, spreadsheets, video and sound editing, graphic creation, animation, mail merge and programming for the web.

Theory: Hardware and software, Monitoring and control, Algorithms and flowcharts, New and emerging technologies, Project management & System life cycle.

Assessment overview

PAPER 1 - Theory: Structured questions (25%)

1 hour and 45 minutes

70 marks

(50% of the AS)

PAPER 2 - Practical: Database, Spreadsheet & Video editing (25%)

2 hours and 30 minutes

90 marks

(50% of the AS)

PAPER 3 - Theory: Structured questions (25%)

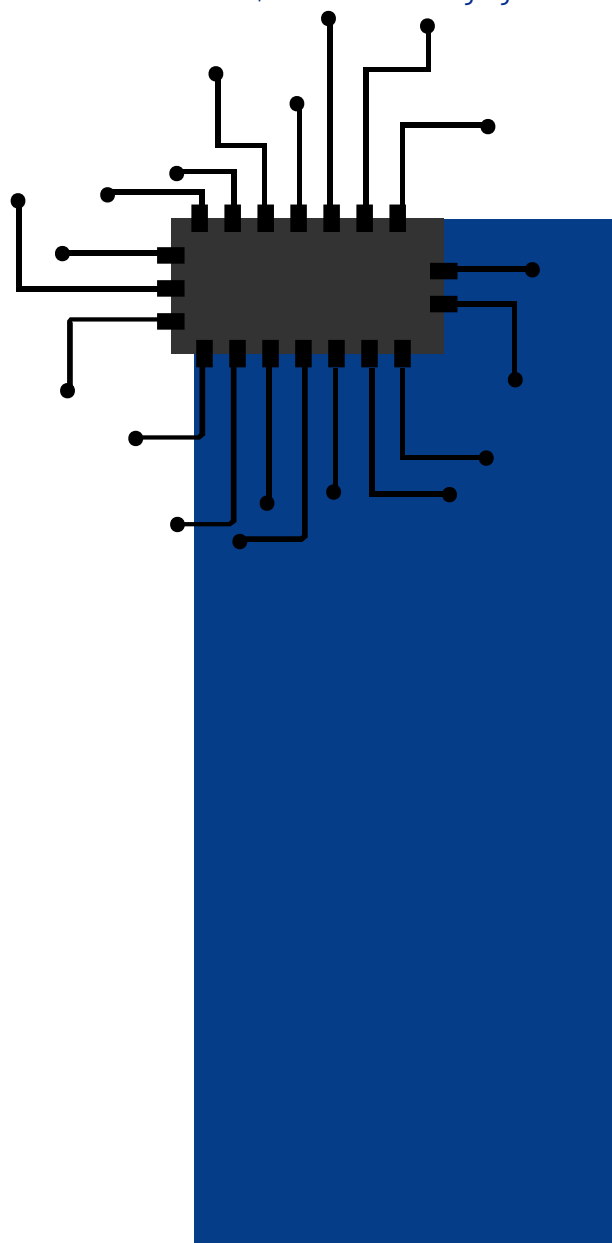
1 hour and 45 minutes

70 marks

PAPER 4 - Practical: Mail merge, Graphics, Animation & Coding, Database & Spreadsheet (25%)

2 hours and 30 minutes

90 marks



A LEVEL ENGLISH (9093)



Syllabus overview

Cambridge International AS and A Level English Language provides learners with the opportunity to study English language and its use in communication. Learners will be encouraged to respond critically to a wide variety of texts in a range of forms, styles and contexts, and to promote skills of communication, reading, research and analysis.

Through their study, learners will develop an ability to read and analyse material, gaining further knowledge and understanding of English language features and issues. Learners will also develop the skills of writing clearly, accurately, creatively and effectively for different purposes and audiences.

Content overview

Cambridge A level English focuses on the following areas:

- Sustaining accurate, fluent and consistent writing.
- Producing informed responses appropriate to the specified form, style, context, and audiences.
- Conveying knowledge and understanding from both specific examples and wider studies.

Assessment overview

(Paper 1 and 2 are part of the AS level (Year 12), and 3 and 4 are A2 (Year 13) Combination of AS and A2 gives the full A level)

PAPER 1 - Reading (25%)

2 hours 15 minutes

50 marks

PAPER 2 - Writing (25%)

2 hours

50 marks

PAPER 3 - Language analysis (25%)

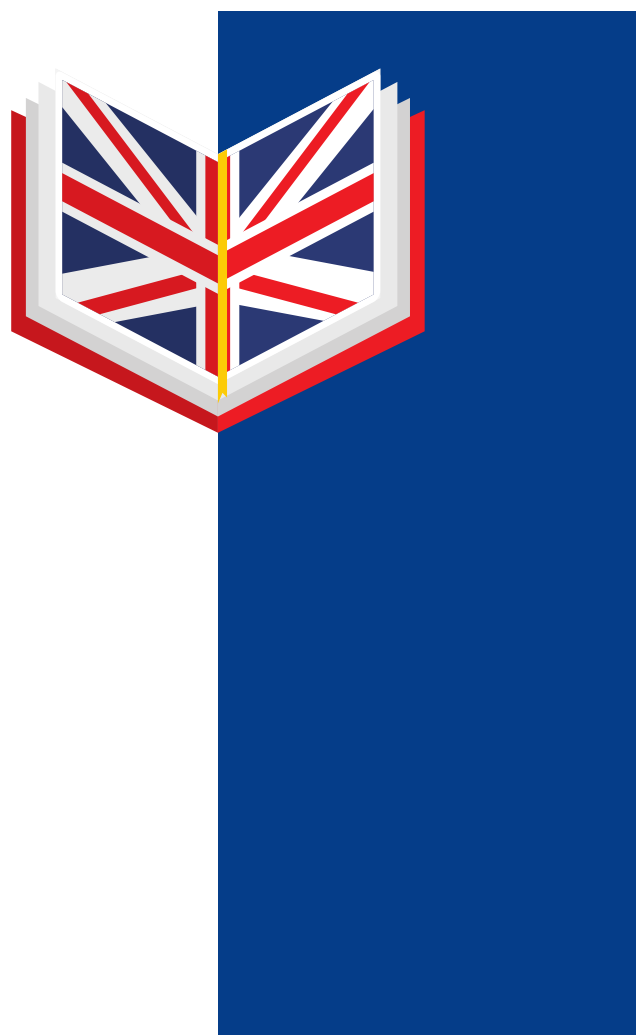
2 hours and 15 minutes

50 marks

PAPER 4 - Language topics (25%)

2 hours and 15 minutes

50 marks



A LEVEL SPANISH (YSP01)



Syllabus overview

The aims and objectives of these qualifications are to enable students to develop:

- an understanding of a wide variety of complex reading texts for different purposes
- an understanding of standard spoken language, whether live or broadcast, on both unfamiliar and familiar topics normally encountered in personal, social, academic or vocational contexts
- the ability to write clear, well-structured texts using an appropriate style, highlighting relevant salient issues, expanding and supporting points of view with supporting arguments (where relevant) and demonstrating the controlled and accurate use of target language and grammar
- the ability to express themselves fluently, spontaneously and appropriately in a range of speaking contexts with little obvious searching for expressions or use of avoidance strategies
- the skills necessary for further study or employment, either in native-speaking countries or where the language is used as the main medium of communication for business and commerce
- an understanding of the nature of language in different cultural contexts in order to build up competence in written communication

Content overview

This qualification is modular and comprises of four units. Unit 1 and Unit 2 (IAS) (may be awarded as a discrete qualification or contribute up to 50 per cent of the total International Advanced Level marks) and Unit 3 and unit 4 (IA2). Speaking communication skills are assessed in Units 1 and 3 and skills of listening, reading and writing are assessed in Units 2 and 4.

Achievement in IAL Spanish is benchmarked against the advanced level General Certificate of Education (GCE) and the Council of Europe's Common European Framework of Reference for Languages (CEFR) at level B2.



Assessment overview

IAS					
Unit number & name	Unit code:	% of the total IAS	% of the total IAL	Examination duration	Marks available
Unit 1 Spoken expression and response	WSP01/01	30%	15%	8-10 minutes	40 marks
	Content overview - Response and discussion in relation to GTAs: Youth Matters; Lifestyle, health and fitness; Environment and travel; Education and employment.				
Unit 2 Understanding and written response	WSP02/01	70%	35%	2 hours 30 minutes	90 marks
	Content overview - Comprehension and essay writing in relation to GTAs: Youth Matters; Lifestyle, health and fitness; Environment and travel; Education and employment.				

IA2					
Unit number & name	Unit code:	% of the total IAS	% of the total IAL	Examination duration	Marks available
Unit 3 Understanding and spoken response	WSP03/01	30%	15%	11-13 minutes	40 marks
	Content overview - Advanced level understanding as well as speaking skills where students present and take a clear stance on any issue of their choice: Debate; Discussion.				
Unit 4 Research, Understanding and Written Response	WSP04/01	70%	35%	2 hours 30 minutes	90 marks
	Content overview - Convey comprehension of target language texts and recordings in relation to GTAs: <ul style="list-style-type: none"> • Youth matters; Lifestyle, health and fitness; Environment and travel; Education and employment; Technology in the Spanish-speaking world; Society in the Spanish-speaking world; Ethics in the Spanish-speaking world. • Plus an essay based on one research topic from: History, Geography, texts or films. 				

A LEVEL GERMAN



Syllabus overview

Choosing the Pearson Edexcel International A Level in German provides students with a globally recognized, modular qualification that prioritizes flexibility, cultural awareness, and critical thinking. It is structured to help learners build practical linguistic skills while facilitating smooth progression to further study or employment

Content overview

Unit 1: Spoken expression and response:
Externally assessed spoken examination: 8-10 minutes

Unit 2: Understanding and written response
Externally assessed written examination: 2 hours and 30 minutes

Unit 3: Understanding and spoken response
Externally assessed spoken examination: 11-13 minutes

Unit 4: Research, understanding and written response
Externally assessed written examination: 2 hours and 30 minutes



Why choose the Edexcel A Level International German?

The IAL covers broad topics that relate to the general interests and lives of international students. Core themes typically include:

- Youth, lifestyle, and education
- Environment, travel, and health
- Technology, media, and culture
- Society, employment, and current affairs

German is the most widely spoken native language in Europe. Germany boasts the largest economy in Europe, making German a highly valuable asset in international business, finance, law, engineering, and STEM fields.

A Level languages are highly regarded by top-tier universities (like the Russell Group in the UK) as "facilitating subjects" because of the rigorous mental discipline they require.

Adding a language to your profile helps you stand out in the competitive job market, proving to employers that you possess problem-solving skills, cultural awareness, and strong communication abilities

A LEVEL RUSSIAN LANGUAGE



Syllabus overview

The Pearson Russian A-Level syllabus provides a comprehensive overview of advanced Russian language, literature, and culture. Students develop proficiency in all language skills through authentic materials. They explore a range of literary texts and films, examining cultural themes and societal development. Assessment includes written exams and oral assessments. Co-teaching flexibility allows for AS Level entry after the first year. The syllabus ensures manageable content and continuous progression from Key Stage 5. Overall, it offers a stimulating learning experience in Russian language and culture.



Why choose the Edexcel Level 3 Advanced GCE in Russian?

At Sage College, we are excited to introduce the Edexcel Level 3 Advanced GCE in Russian as a new A-Level subject next year. This course has been designed to inspire students through the study of Russian language, literature, film, and culture, while developing advanced communication and analytical skills.

The qualification prepares students for higher education and enhances employability through practical language and transferable study skills. Students will explore engaging themes connected to Russian-speaking countries, supported by authentic materials, literary works, and films.

Assessment focuses on spontaneity, grammar, creativity, and critical thinking through written, spoken, and externally assessed examinations. The course is structured around four themes and includes a speaking assessment conducted by a teacher-examiner.

With co-teachable AS and A Level qualifications, students benefit from a smooth progression of learning and flexible preparation for exams. By choosing Russian at Sage College, students will gain valuable linguistic skills and a deeper understanding of Russian culture in a stimulating and supportive environment.

A LEVEL HISTORY (9489)



Syllabus overview

The key concepts for Cambridge International AS & A Level History are:

- Cause and consequence of events, circumstances, actions and beliefs that have a direct causal connection to consequential events and developments, circumstances, actions or beliefs. Causes can be both human and non-human.
- The patterns, processes and interplay of change and continuity within a given time frame.
- The patterns of similarity and difference that exist between people, lived experiences, events and situations in the past.
- The importance attached to an event, individual or entity in the past, whether at the time or subsequent to it. Historical significance is a constructed label that is dependent upon the perspective (context, values, interests and concerns) of the person ascribing significance and is therefore changeable.
- Interpretations of how the past has been subsequently reconstructed and presented by historians.

Content overview

Cambridge AS level History focuses on the following areas:

- International history, 1870–1945

Cambridge A level History focuses on the following areas:

- International history, 1945–92

Assessment overview

(Paper 1 and 2 are part of the AS level (Year 12), and 3 and 4 are A2 (Year 13). Combination of AS and A2 gives the full A level)

PAPER 1 - Document questions (20%)

1 hour and 15 minutes

40 marks

PAPER 2 - Outline study (30%)

1 hour and 45 minutes

60 marks

PAPER 3 - Interpretations questions (20%)

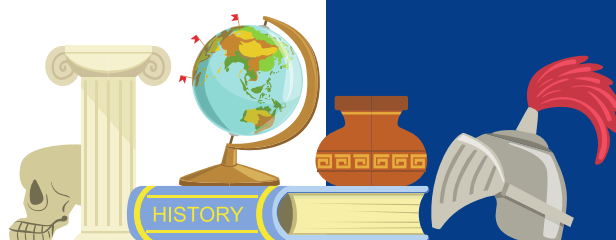
1 hour 15 minutes

40 marks

PAPER 4 - Depth study (30%)

1 hour 45 minutes

60 marks



A LEVEL BUSINESS (YBS11)

Syllabus overview

Studying Pearson A Level Business Studies provides invaluable transferable skills for employment, including data analysis, effective communication, and teamwork. Covering accounting, finance, marketing, and operations management, the course fosters a comprehensive understanding of business operations. Whether aspiring to entrepreneurship, a business-related career, or broader worldly awareness, the knowledge proves beneficial. Notably, it cultivates an entrepreneurial mindset, offering insights into the challenges and opportunities inherent in business ventures. A Level Business Studies equips students with the tools necessary for success in various professional endeavours, fostering adaptability and strategic thinking in an ever-evolving business landscape.

Content overview

Unit 1: Marketing and People

Meeting Customer Needs, The Market, The Marketing Mix and Strategy, Managing People, Entrepreneurs and Leadership

Unit 2: Managing Business Activities

Planning a Business and Raising Finance, Financial Planning, Managing Finance, Resource Management, External Influences

Unit 3: Business Decisions and Strategy

Business Objectives and Strategy, Business Growth, Decision-making Techniques, Influence on Business Decisions, Assessing Competitiveness, Managing Change

Unit 4: Global Business

Globalisation, Global Markets and Business Expansion, Global Marketing, Multinational Corporations

Assessment overview

Paper 1: Marketing and People

50% of IAS, 25% of A Level
80 Marks

Paper 2: Managing Business Activities

50% of IAS, 25% of A Level
80 Marks

Paper 3: Business Decisions and Strategy

50% of IA2, 25% of A Level
80 Marks

Paper 4: Business Decisions and Strategy

50% of IA2, 25% of A Level
80 Marks



BTEC INTERNATIONAL BUSINESS

Syllabus overview

In today's world of international business, success is driven by people with the skills to balance satisfying their customers with providing great products and services.

Level 3 Business has been designed for learners who are interested in developing business-sector knowledge and skills alongside other fields of study, or to pursue a career in business via higher education, to access graduate entry employment with businesses.

Syllabus Overview

The course is divided into 2 sections - Mandatory units and Optional units.

Students must complete 2 Mandatory units and a combination of optional units totaling 180 Guided Learning Hours.

Mandatory Units:

- Exploring Business
- Research and Plan a Marketing Campaign

Optional Units (Examples)

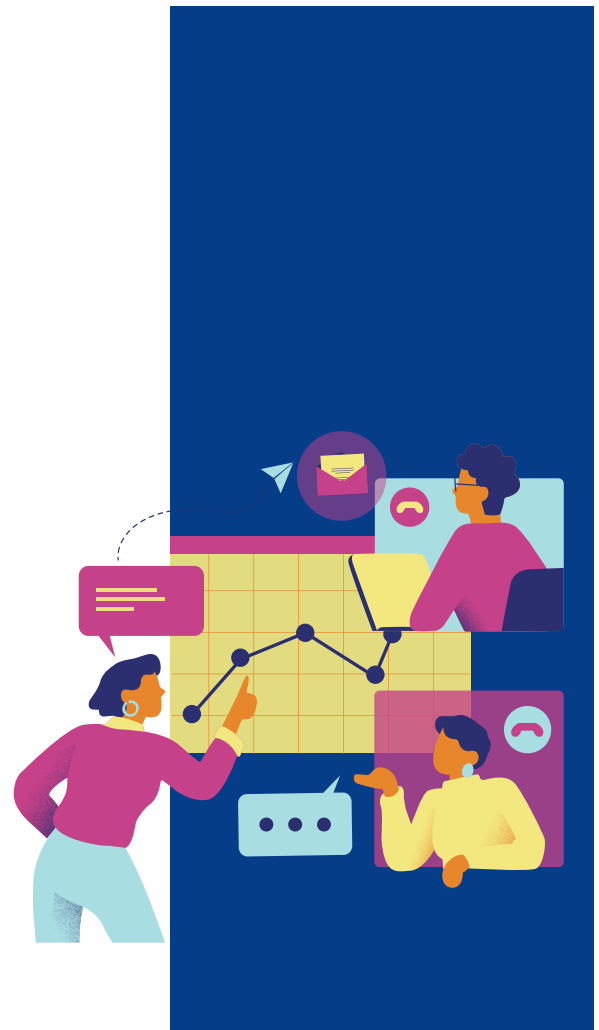
- Business Finance 90 GLH
- Managing an Event 90 GLH
- International Business 60 GLH
- Principles of Management 60 GLH
- Business Decision Making 120 GLH
- Human Resources 60 GLH
- Team Building in Business 60 GLH
- Recording Financial Transactions 60 GLH
- Financial Statements for Public Limited Companies 60 GLH
- Financial Statements for Specific Businesses 60 GLH
- Cost and Management Accounting 60 GLH
- Investigating Customer Service 60 GLH
- Investigating Retail Business 60 GLH
- Visual Merchandising 60 GLH
- Digital Marketing 60 GLH
- Creative Promotion 60 GLH

Assessment Overview

Units are assessed through a combination of internal assessments and Pearson Set Assignments which are scenario based.

All assessments are internally marked and externally moderated by Pearson

Students will create a portfolio of evidence for each unit such as reports, presentations and practical observations



A LEVEL TRAVEL AND TOURISM (9395)



Syllabus overview

Cambridge International AS and A Level Travel and Tourism (9395) is ideal for those seeking to specialise in this subject. The course encourages learners to appreciate the changing nature of travel and tourism and understand the importance of sustainability in the development and management of the industry. This syllabus enables learners to understand the concepts and theories in travel and tourism and recognise their impact on people, environments and economies it also develops learners' practical and research skills through planning and organising an actual tourism event, which will contribute to their further study and working in the industry.

Content overview

Cambridge A level Travel and Tourism focuses on the following areas:

- Features of the travel and tourism industry
- Principles of customer service in travel and tourism
- Planning and managing a travel and tourism event
- Defining, building, implementing, and monitoring a destination brand
- Destination management
- Impacts of tourism development

Assessment overview

(Paper 1 and 2 are part of the AS level (Year 12), and 3 and 4 are A2 (Year 13). Combination of AS and A2 gives the full A level)

PAPER 1 - The industry. Essay and short-answer questions (33%)

2 hour and 30 minutes

100 marks

PAPER 2 - Coursework project: Planning and managing a travel and tourism event (17%)

50 marks

PAPER 3 - Destination marketing. Essay and short-answer questions (25%)

1 hour 30 minutes

50 marks

PAPER 4 - Destination marketing. Essay and short-answer questions (25%)

1 hour 30 minutes

50 marks



A LEVEL DRAMA (9482)



Syllabus overview

Cambridge International AS & A Level Drama encourages learners to develop their skills in performing, devising and researching a wide range of theatrical styles and genres. They learn to communicate with an audience through practical and creative work on performance texts and their own devised material, both as individuals and in groups. Underpinned by theoretical and practical study, they learn to research, analyse, create and interpret, and to become skilled, well-informed and reflective theatrical practitioners who enjoy drama.

Cambridge International AS & A Level Drama provides a foundation for the further study of drama or related courses in higher education.

Content overview

Cambridge International AS & A Level Drama encourages students to explore a range of practical and theoretical approaches to drama from script to performance. The syllabus encourages students to develop the ability to apply practical skills effectively and to analyse and evaluate both their own work and the work of others.

Assessment overview

COMPONENT 1

Written exam 2 hours

60 marks

Candidates answer two questions: one question from Section A and one question from Section B.

Open-book exam

Externally assessed

50% of the AS Level - 25% of the A Level

COMPONENT 2

Practical drama Coursework

60 marks

There are two compulsory parts: devising and performing. Candidates work in a group to devise and perform a play based on the stimulus prescribed in the syllabus. There are two parts to the devising coursework: - 10-15 minute devised piece - 3 minute self-evaluation Candidates work in a group to prepare and perform an extract from a published play of their own choice. There is one part to the performing coursework: - 10-25 minute scripted performance

Internally assessed and Externally moderated

50% of the AS Level - 25% of the A Level

COMPONENT 3 - Theatre-making and performing

Coursework

60 marks

There are two compulsory parts: devising and performing. Candidates work in a group to devise and perform a play inspired by one of the theatre practitioners, traditions or styles prescribed in the syllabus. There are two parts to the devising coursework: - 15-20 minute group devised performance - 800 word analysis and evaluation Candidates individually create a programme of thematically linked materials and perform it. There is one part to the performing coursework: - 6-8 minute individual performance

Internally assessed and externally moderated

25% of the A Level

COMPONENT 4 - Theatre in context

Coursework

60 marks

Candidates explore performance texts, a theatre genre, a theatre practitioner's work or a performance style. There is one part to the research coursework: - 2500-3000 word research essay Externally assessed

25% of the A Level



BTEC INTERNATIONAL SPORT (2026)



Content Overview

The Extended Certificate (Equivalent to one A Level) is for students who are interested in learning about the sport industry alongside other fields of study, with a view to progressing to a wide range of higher education courses, not necessarily in sport related subjects. The qualification is designed to be taken as part of a programme of study that includes other appropriate BTEC International Level 3 qualifications or International A Levels.

Syllabus Overview

The course is divided into 2 sections - Mandatory units and Optional units.

Students must complete 3 Mandatory units and an additional 3 Optional units

Mandatory Units:

- Health, Wellbeing and Sport
- Fitness Testing
- Practical Sports Performance

Optional Units:

- Business in sport
- Fitness Training
- Sports Performance Analysis
- Rules, Regulations and Officiating in Sport
- Organising Events in Sport and Physical Activities
- Sports Tourism
- Instructing Circuit Exercise Sessions
- Influence of Technology in Sport and Physical Activities

Assessment Overview

Units are assessed through a combination of internal assessments and Pearson Set Assignments which are scenario based.

All assessments are internally marked and externally moderated by Pearson

Students will create a portfolio of evidence for each unit such as reports, presentations and practical observations

